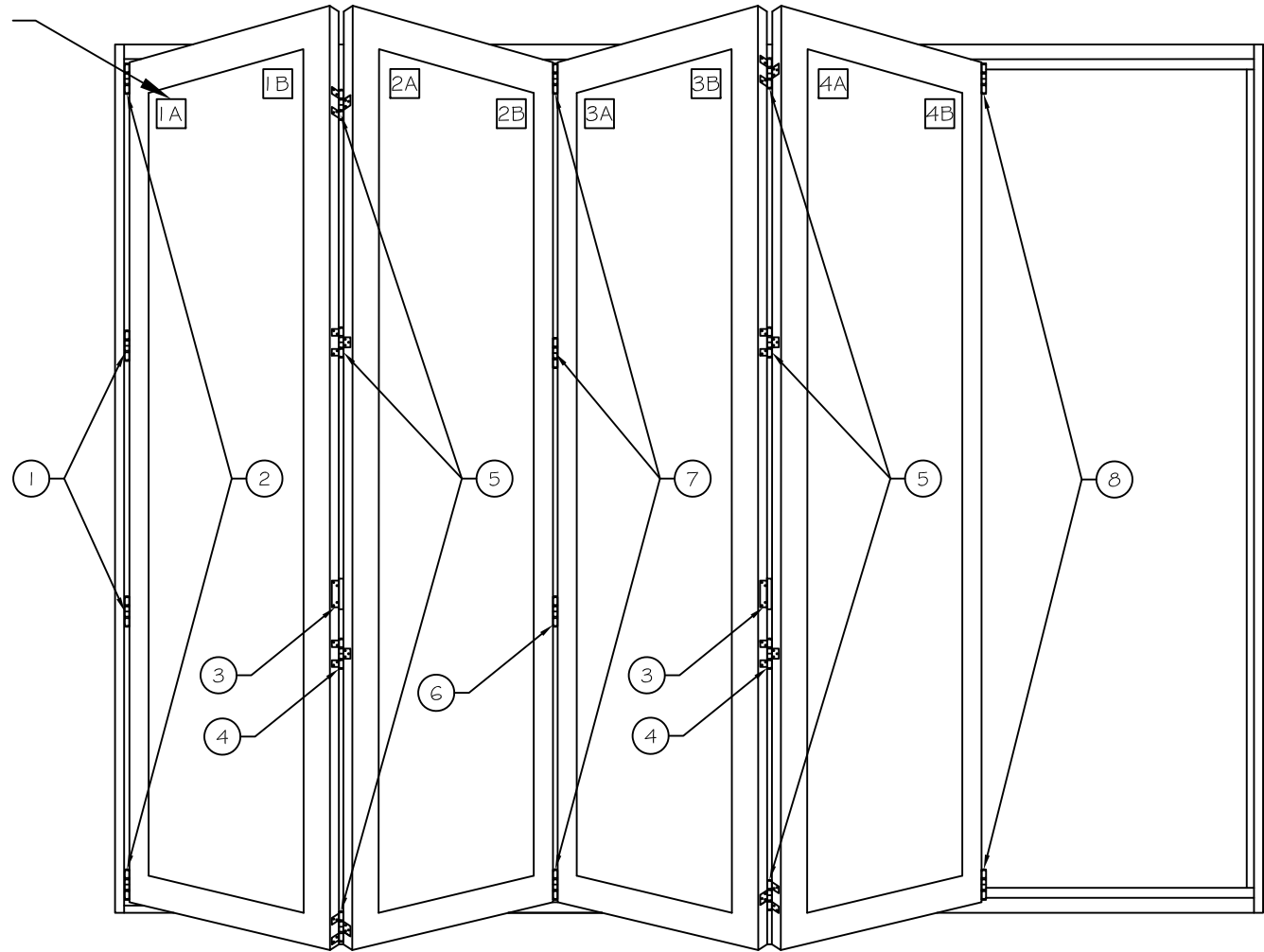


\*Panels labeled at Windor



\*Door as viewed from the exterior

Folding Door Parts

	Qty.	Description			Qty.	Description
1	2	E3 WPS Middle Wall Pivot (used with doors over 90" Height)		7	1	E3 CICS Intermediate Carrier Set
2	1	E3 CPS Pivot Set		8	1	E3 CRC Right hand Carrier Set
3	2	E3 HOL Handle Only				
4	2	E3 HHNHS Offset Hinge No Handle				
5	2	E3 HHNHS5 Offset Hinge Set no Handle				
6	1	E3 HNHS Flat Hinge no Handle				

Project:	File name: 3750 Folding Door Parts - Doors 8'-10' Height	Date: 20200716
Notes:	Layout: 4.4.0	Drawn By: J Johnson